

# WALLACE MEMORIAL PRESBYTERIAN CHURCH NEWSLETTER

JUNE 2016

Late Spring Worship | June 5th - 26th |

Theme: A Balanced Team Effort

View our color version online: [wallacememorial.org](http://wallacememorial.org)



Serving God, Loving All



## June Worship Engaging the Mission

During the summer months we will be celebrating the mission of the church through our engagement of scripture, music, and response to the call of the Lord to "go and make disciples of all nations, baptizing them in the name of the Father, and of the Son and of the Holy Spirit, and teaching them to obey everything that I have commanded you." Matt. 28: 19-20

**June 5th**  
**Third Sunday of Pentecost**  
Sacrament of Communion

Scripture Lesson Luke 7: 11-17  
Morning Message: "Raising the Bar"

## **June 12th** **Fourth Sunday of Pentecost** **Mission Fair Sunday**

Scripture Lesson Luke 7: 36-8:3  
Morning Message: "The Resources of Mission"  
Commissioning of Lakota Art Team

## **June 19th Fifth Sunday of Pentecost**

Scripture Lessons: Psalm 23 & Matthew 18: 10-14  
Mission through Media

Elder Gregg Hartung, Executive Director of Presbyterian Media Mission  
"The Good Shepherd Challenges Us to Remember"

## **June 26th Sixth Sunday of Pentecost**

Elder Roy Humphrey "The Focus of Mission" & Julie Humphrey "Her Star Scholars"

*The Sacrament of Communion will be observed on the first Sunday of the month in June, July and August.*

# Pastor's Corner



## "A Balanced Team Effort."

As I write this, the Pittsburgh Penguins are vying for the Stanley Cup. "Let's Go Pens!" Many of you know I am an avid hockey fan and have been following the Penguins since I was 7 years old. I have watched this team over the course of this season as they moved from uncertainty, mediocrity, to contender. It took over 3 months until the team was clicking with 4 well balanced lines and a total team effort was producing the desired result. Injuries and a few trades were a factor in bringing forth the opportunity for new people to emerge as important pieces to the whole. The featured "star players" became more focused on the team goals and encouraging the full effort of all to get to the final Stanley Cup round. New energy came from a group of new players to blend with the veterans to provide an infusion of enthusiasm. Whether they win the cup or not, I have seen a total team effort unfold and the result is a synchronized flow to how they play together to accomplish a good result. I believe this is the way a congregation should work to fulfill the total mission it is called to fulfill for the purpose of the Kingdom of Jesus Christ. Especially if our vision is to "Serve God and Love All!"

During the summer months we will be focusing on the discipleship engagement for the Kingdom of Jesus Christ that is before us as a congregation.

A Mission Fair is planned for Sunday, June 12th to let everyone explore options for engaging in the mission projects that are a part of our outreach efforts. We want everyone to not only know about each mission project, but find a way to engage in at least one project to support the overall "team effort." We want people to wrap their head and heart around the mission outreach efforts we are committed to as a congregation. Each outreach project requires a team of people to fulfill our commitment to the project. We will discover which outreach projects members want to engage in moving forward, and if a project is not engaged, we will consider dropping it from our overall activity.

In July we will be hosting another mission outreach project through the Summer Kids Week, July 11-July 15, however we will need a team of volunteers to implement the program as we go on a "Cave Quest" (See Separate article). Then in August, we will involve ourselves in a month long engagement of Scripture and the Arts. A full month of activities is being planned with art displays, a children's art camp, art workshops, and several music activities highlighting this emerging connection to our community through the arts.

While all of this is going on, we are continuing to make plans to unveil a new worship option in the fall and enhance our Sunday worship service and disciple making options on Sunday mornings and weekdays in the fall. We will begin our search for a new Director of Christian Education and Spiritual Formation with an emphasis on adult nurture and disciple making development. All of these things will require a balanced team effort not only by the Leadership Team, but a

full effort of members to fulfill the ambitious goals of our congregation over the next several years. New and exciting things are unfolding and we hope everyone will find a portion of the ministry and mission to engage in to bring everything to fruition. Let's Go Disciple Team!

*Peace.*

*Pastor Dennis*

P.S. Please hold the Lakota Art Team in your prayers from June 16th – 26th as this team of 17 people journey to Pine Ridge Reservation to conduct another week long Art Camp at Little Wound School and learn more about coming alongside the Lakota Sioux in restoring traditional values and improve their future as a sovereign nation of people.



# Events and Announcements



## JUNE EVENTS

**Wednesdays: June 8, 15, 22  
and 29**

**Songs from the Heart**

6:30pm-8:30pm

The Wallace Church Lounge

**Friday, June 10th**

**Second Friday Serenades**

Duo of Ashely Freeman, violin, and Ellen Fast, piano

12:30pm - Wallace Sanctuary

**Sunday June 12th**

**Wallace Mission Fair**

12:30pm - Fellowship Hall

**Sunday June 12th**

**Ladies Afternoon of Chocolate and Fondue**

3:00pm - 5:00pm -

The Wallace Church Lounge

**Friday, June 24th**

**Interfatih Exploration Group  
SS Simon and Jude Movie**

**Night: St. Francis of Assisi**

7:00pm - 8:30pm - SS Simon

and Jude Sanctuary

**Sunday, June 26th**

**The Wallace Soul Series:  
Janet McKee, Food for Life  
Workshop.**

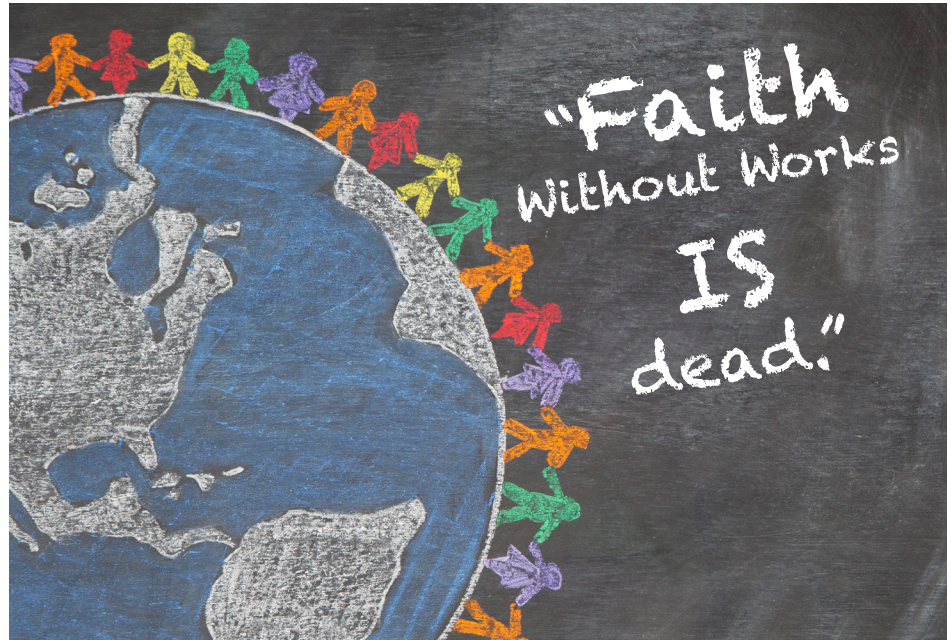
6:30pm - Wallace Chapel

**Wednesday, June 29th**

**High Nooners Trip to  
Moundsville Penitentiary**

8:30am - Depart Church Parking Lot

**Don't Miss the Wallace Mission Fair on June 12th!**



**Join us in Fellowship Hall directly after worship to find out how YOU can make a difference.**

The mission team, and leads for each mission, will be hosting a lunch after worship on June 12th. Come and learn about all the mission projects that you support through your giving to Wallace and how you can get involved. Please RSVP by June 5th through the office of realm. Any questions can be directed to Chris Franceschina, [chris.franceschina@gmail.com](mailto:chris.franceschina@gmail.com)

*A special thank you to Dom DeMarco of Feeney's Weenies for providing lunch!*

## MISSIONS REPRESENTED

Bethlehem Haven • East End Cooperative Ministries • PRISM  
Operation Safety Net • World Mission Initiative • Nursery School  
• Kay Day • Amy Galetzka • Food Pantry • Food Bank • Presbyterian Shared Mission • Her Star Scholar • Lakota Mission • Pittsburgh Theological Seminary

## **Volunteers Needed - Financial Review Committee**

The Presbyterian Church USA Book of Order requires that a full financial review of all financial books and records of its affiliated churches be conducted every year. This review is to be conducted by a committee of church members. Wallace Memorial is currently in the process of forming a committee to conduct the 2015 annual review.

Anyone interested in being a member of the committee should submit their name to the church office or contact Lance Cunningham, Church Treasurer.

# Events and Announcements



## Welcome New Members

We welcomed six new members in May. They are Tiffany Ennis, Annie and Brian Schmitz, Rob Hayes, and Opal and Tyler Middleton. We hope you will get to know them better through these brief introductions:

Tiffany, husband Ashton, and son Sam, soon will be moving into their new home near Hartwood Acres. Tiffany was baptized at Wallace and also a prior member. After traveling out of the area, the family returned to Pittsburgh. Her hobbies are cooking, gardening and crafts with interests in travel, eating at new places, art and music.



**Tiffany Ennis**



**Annie Schmitz**



**Brian Schmitz**

Annie, Brian, and daughter Elle are Green Tree residents living within walking distance of the church. Annie enjoys crafting, shopping and traveling, while Brian's interests are in singing and camping. The Schmitz family came to Wallace through Chancel Choir Conductor Stephen Schall, who sings with Brian in the Mendelssohn Choir. They are originally from Missouri.

Rob, wife Meredith Barrett, and their children Dylan, and Sierra, live on Crane Avenue. Meredith is our new Director of Communications. Among Rob's interests are reading, writing and travel. He cites the friendliness and openness of the congregation, which drew him and his family to our church.



**Rob Hayes**



**Opal Middleton**



**Tyler Middleton**

Opal and Tyler live in Beechview with family members Vanya, Daedalus and Kestrel. Opal includes crafting, cooking, and playing complex board games among her hobbies with interests in service and social justice, ballet, opera and literature. Tyler's hobbies are photography, aquariums, and indoor gardening. His interests cover topics such as the weather, religion, light and soccer.

Please help make our new members feel welcome.

# Events and Announcements



## Congratulations to Sally Petro

We are proud to announce to our congregation that Sally Petro has received The Joyce Rothermel Peace and Social Justice Award from the Greater Pittsburgh Community Food Bank ("GPCFB").



This award was established by the GPCFB in honor of Joyce Rothermel, former Executive Director and co-founder of the GPCFB and an activist for social justice. The award is given annually to one volunteer or staff person chosen from the GPCFB's 11-County network of 400 member agencies as one who has shown significant contributions to alleviate hunger and reduce poverty, demonstrated a commitment to public service, peace and social justice, and demonstrated leadership in the fight against hunger and exemplary advocacy in pursuit of these objectives.

Sally Petro has served our food pantry as its coordinator for the past 10 years. She has served with competence, forward-thinking, straight-forwardness, intelligence and broadmindedness, but most importantly with compassion for every client we serve. She has expanded our pantry and its services to include deliveries to families without access to transportation, has made referrals to community and governmental agencies for further assistance, and has made connections and established relationships with organizations within our surrounding communities that provide financial support, services and donations of foods and other goods that we can distribute to our clients. She supports our food pantry and its clients with commitment, time, heart and with a constant awareness of the needs of each client... all of which has made our food pantry what it is today... one of our greatest missions at Wallace Memorial.

## Art Fun for Adults at Wallace Church!



During our month long celebration of the arts in August, The Scripture and the Arts Team, is offering an art workshop for adults on Saturday, Aug. 20, from 9:30-2:00 at Wallace. No art experience is necessary for this creative workshop using Yupo paper and alcohol inks. All materials will be provided for this hands-on art experience that encourages the realistic painter of any medium to loosen up; provides more abstract artists with time trying newer mediums; and allows someone with no art experience to explore. Register early, space is limited!

To find out more information on both the Adult Workshop and Art Mini Camp, please visit The Scripture and the Arts Team's page on the Wallace website:

[http://wallacememorial.org/  
scripture-arts-team/](http://wallacememorial.org/scripture-arts-team/)

You can download and print registration forms from the web page, or obtain them through the church office. Please note forms cannot be submitted on-line, please return all forms to the church office.

Also remember art entries are due on June 30th for the Summer Art Exhibit in August!



## Scripture and the Arts Mini-Camp Monday, August 1 through Wednesday, August 3, 2016 9 AM-Noon

*For students entering 6th grade  
through 12th grade fall 2016  
@ Wallace Memorial Presbyterian Church*

All community children are invited; however camp is limited to the first 20 children to register. The only cost is the registration fee: \$10 per family\*

The camp will be providing instruction, all supplies, and a safe, encouraging environment to create visual art; setting the stage for the student artist to enter a thin place -- a Celtic term for a place where spiritual truths are recognized.

# Interfaith Exploration



The Interfaith Exploration Group from Saint Simon and Jude Parish and Wallace Memorial Presbyterian Church invites you to a -

Summer Movie Series on **EPIC STORIES OF FAITH:**

## ***The Extraordinary Impact of Ordinary People***

**Friday, June 24: St. Francis of Assisi**

*Perhaps best known for his love of animals, St. Francis of Assisi went from a privileged upbringing to his profound commitment to "Lady Poverty."*

**Friday, July 29: Dietrich Bonhoeffer**

*Lutheran pastor, theologian, Nazi resistance fighter, and martyr.*

**Friday, August 19: Peter (Part I)**

**Friday, August 26: Peter (Part II)**

*Follow the story of Peter on his journey from denial to determination, becoming the rock and guardian of Christianity.*

ALL MOVIES ARE 7:00 to 8:30PM...

...in the Air Conditioned

SANCTUARY AT SAINT SIMON and JUDE PARISH, GREEN TREE

Snacks and Beverages will be provided!

All ages are welcome; Invite your family and Friends!

Members and Friends of Wallace are invited to "Learn About Our Saint Simon and Jude Friends and Their Church"!

The Interfaith Exploration group from Saint Simon and Jude Parish (SSJ) and Wallace Memorial invites everyone to visit SSJ on Monday, June 20 at 7:00pm in the SSJ sanctuary. We will join together to view a video which breaks down the elements of a Roman Catholic Mass and describes why they do what they do throughout their worship. There will be lots of time for questions and discussion, and church tours of SSJ will follow the video. Refreshments will be served. Plan to bring the whole family and join us for this opportunity to enhance our understanding of Roman Catholic worship and tradition!



# Youth Ministry



## PENTECOST PICS



## Teacher Feature Tiara Vater



Tiara teaches the Kids' Class which includes pre-k through first grade students. Tiara has been a member here at Wallace for four years now and began teaching in 2013. She first helped with Vacation Bible School and then was recruited by Ellen Heriger, who has been her inspiration, to teach Sunday school.

She remembers being very nervous on her first day of teaching. Her favorite part of teaching is interacting with the kids. Tiara spends between one to one and a half hours preparing her lesson. Tiara is very busy here at Wallace as she serves on several committees including the New Worship Team, the Youth Committee, The Table, and is currently a deacon.

Tiara grew up in Altoona and is married to Nate, who teaches the middle school class.

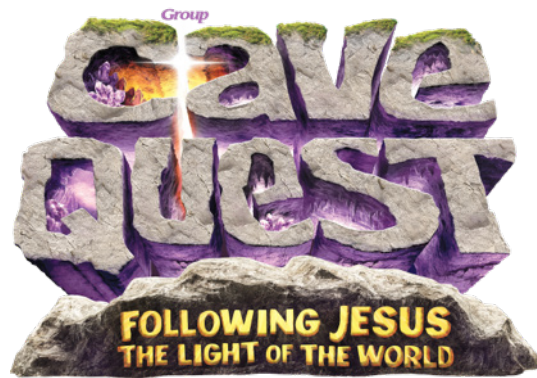
## Operation Safety Net

The Middle School is beginning their project of collecting items needed to help support Operation Safety Net. Operation Safety Net was founded by Dr. Jim Withers when he began medically treating the homeless on the streets and under the bridges of Pittsburgh. He was recognized as CNN's Hero of the Year. They are especially in need of disposable razors, deodorant, unisex high white cotton socks, granola bars, cases of water and Gatorade. Gift cards to Payless Shoes, McDonald's, and Giant Eagle are a huge help also. The proceeds from the Ugly Christmas Sweater project back in December will also be used to purchase items needed. A collection box is located in the Narthex. Thank you for your help!

# Youth Ministry



IGN  
Y\*!M  
+NO  
GUEH  
awoQ



Summer Kids' Week (aka Vacation Bible School) will be:

July 11-15, 2016,  
Monday-Friday from  
9:00am – 12:00pm.

This year's theme is "Cave Quest: Following Jesus, the Light of the World."

Each day, kids participate in small groups, called Cave Crews, and discover practical ways to follow Jesus, the light of the world! Not only will they experience exciting Bible adventures but they'll also watch for God in everyday life through something called God Sightings™. You and your kids will discover that God is active in our lives and that His light shines for us to see it daily!

## Calling all Summer Kids' Week Volunteers!

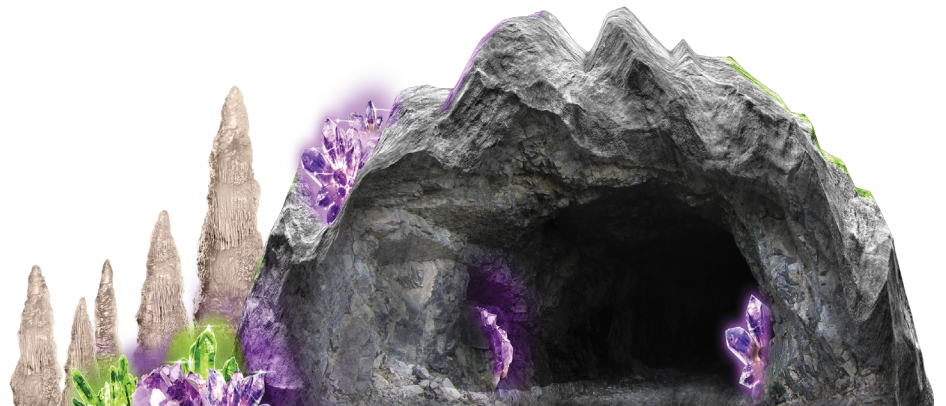
This year's SKW {formerly VBS} will be held July 11 - 15, from 9:00 a.m. to 12:00 noon.

This year's theme is "CAVE QUEST"! Needed are: Shepherds, {who accompany children to classes}; Class Leaders for Deep Bible Quests, KidVid Cinema Time, Imagination Station, Cavern Café, and Spelunker Sports & Games; Registration Helpers, and a Photographer. See Nancy Schultz, or e-mail her at [nschultz@wallacememorial.org](mailto:nschultz@wallacememorial.org). Thank you for your consideration!

Cave Quest is filled with unforgettable Bible-learning experiences kids will see, hear, touch, and even taste! KidVid Cinema shares real stories of real kids who are shining God's light in everyday life! Plus, team-building games, cool Bible songs, and tasty treats keep everyone on the move.

Summer Kids Week is a FREE event, so that's all the more reason to participate!

**You can register you child(ren) on-line at [wallacememorial.org/vacationbibleschool](http://wallacememorial.org/vacationbibleschool).**





# The Wallace Soul Series



**FOOD FOR LIFE**  
The Power of Food for Health



**Janet McKee -  
Visionary Leader, Teacher, Au-  
thor, Board Certified Holistic  
Health Counselor, Award-win-  
ning Film Director, MBA**

*Founder of SanaView, a highly successful Holistic Health Company. Janet and her staff hold various workshops around the greater Pittsburgh Area and beyond. They also run a 52-acre, organic farm in the Laurel Highlands. This farm has been designated an historical landmark.*

*Janet is also the author of "Fabulous Recipes for Vibrant Health", and released a documentary entitled "Bethany's Story", detailing the healing power of food.*

**Sunday, June 26, 6:30pm -  
The Wallace Chapel**

**Topic: "Food for Life" workshop, which focuses on "healthful eating for cancer and diabetes prevention and survival, weight management and children."**

Janet began to explore the medicinal properties of food and holistic healing after experiencing some on-going health issues. She was very inspired after the methods she employed proved to be successful. An altruistic person by nature, Janet became passionate about sharing her newfound way of life in hopes to help others heal.

In 2006 Janet founded SanaView, a multi-faceted Holistic Health organization that includes home offices in the North and South

Hills of Pittsburgh. Additionally the company owns an organic farm in Champion, PA, near Seven Springs and Hidden Valley mountain resorts. SanaView holds numerous classes and workshops in the medicinal properties of food, produces high quality supplements, publishes books on various aspects of well-being, sells specialized kitchen equipment, and even produced an award winning documentary called "Bethany's Story". On her website Janet states, "We chose the name Sanaview, as we recognize that effective transformation begins with having a new 'view' on your health, or Sana in Latin."

SanaView and Janet are highly recommend among numerous respected cardiologists, oncologists and endocrinologists in Pittsburgh's best hospitals. Janet has teamed-up with Stan Wetschler, M.D., who was a successful Pittsburgh doctor in Internal Medicine when he was diagnosed stage IV colon cancer with metastases to his liver and his lungs. Traditional methods of treatment were failing for Dr. Wetchler. He and his wife Janey began to try holistic path of treatment, and fifteen years later Dr. Wetchler is cancer-free.

SanaView has helped people who suffer from cancer, diabetes, heart-disease, autoimmune disorders, or others who simply wanted to embrace a healthier lifestyle. They offer customized diets and personalized nutrition counseling, in addition to corporate wellness plans.

Our bodies are the vehicle that carries our souls, therefore we should treat our bodies as sacred. Sometimes we take for granted or overlook the healing nourishment God has already provided in nature. Come hear Janet's teaching's on June 26th on how to achieve better physical health through the medicinal properties of food. Enjoy some anti-inflammatory turmeric and ginger lemonade (sweetened with Stevia) on us!



# Music and Fellowship



## *Songs from the Heart: A Musical Journey through Grief*

Wednesdays: June 8, 15, 22 and 29, 2016  
6:30pm-8:30pm  
The Wallace Church Lounge



Hans Christian Anderson once wrote, "Where words fail, music speaks." Music has been used to soothe grief since the times of David and King Saul.

**Songs from the Heart: A Musical Journey Through Grief.** Music can evoke treasured memories and give voice to the sorrow that lies within us. This special 4-week series, facilitated by Cindy Grindel, Bereavement Coordinator, and Ellen Gross, Music Therapist at Heartland Hospice, will use music to explore some of the normal aspects of grief and help us discover new ways to navigate the journey. The program is free of charge and open to anyone who has experienced the loss of a loved one.

The program will be held at Wallace Church, in the lounge, on Wednesdays, June 8, 15, 22 and 29, 2016 at 6:30-8:00 p.m. in the Lounge. Pre-registration is requested. Please call Cindy Grindel at 412-919-5600 to register or for more information.

Be sure to mark your calendars for the final concert in our Second Friday Serenade Series, Friday, June 10, 12:30pm in the Wallace Sanctuary. The duo of Ashely Freeman, violin, and Ellen Fast, piano, will delight us with a variety of genres. Come, bring a friend and revel in the magnificence of beautiful music. Share the gifts that Wallace has to offer with a neighbor, or acquaintance!



The High Nooners' Meeting for June will be a trip to Moundsville, WV, near Wheeling, for a 90-minute guided tour of **The Moundsville Penitentiary on Wednesday, June 29.** We will leave the church parking lot at 8:30 AM via car pool for a 10:00 AM tour of the historic Gothic-style structure which will last 90 minutes. We will then have lunch at Young's Cafeteria, also in Moundsville. The cost for the tour will be \$7. or \$9., depending on how many we have attending. More details will follow as we get closer to the date.

If you are interested in attending, contact **Linda Aspinall** via email, [laspinall27@gmail.com](mailto:laspinall27@gmail.com) or phone: 412-276-6803. Look forward to seeing you there!

On Sunday, June 12, Becca Abbott is hosting a Ladies Afternoon of "**Chocolate Fondue and Tea**" to get to know our Music Director, Sandy, and to give her the opportunity to become more acquainted with us.

The afternoon Hot and Cold activities will be from 3:00-5:00pm and will include: Icebreakers, hot steam facials and masques, fellowship with the diffusing of essential oils. Sandy collects tea and will provide the tea, just bring your favorite fruit, cheese or potato chips for the fondue. If you need ideas for dipping, talk to Becca. RSVP to Becca by Sunday June 5, at [Rebecca.a.abbott@gmail.com](mailto:Rebecca.a.abbott@gmail.com).

# Birthday Fund 2016: Raise the Roof!



The Birthday Fund is an opportunity to give back for the blessing of life, and to help us save for a rainy day! This year again the focus of the birthday fund will be "Raising the Roof!" During your birthday month, we ask that you consider giving one dollar for each year of your age in celebration of your years. But it is not limited to those celebrating a birthday during any given month - not at all! Do you see a name of a dear friend on the list below, or someone who has inspired you in your faith journey? Make a gift in honor of his or her birthday.

Gifts can be submitted on Sundays, using the blue envelopes located in the sanctuary pews (please indicate "Birthday Fund" on your check or envelope), or submitted at any time in person or through the mail - simply complete the form below with your info, and return it to the church office.

## HAPPY BIRTHDAY TO ALL OF THOSE BORN IN JUNE!

6/1 Betsy Martinelli	6/9 Charles McDermott	6/17 Stephen Heriger
Joyce Olander	6/10 James "Jake" Cunningham	Vivian Sterling
Adam Osmianski	Sammy Tortorella	6/18 Coralie Frame
Tim Schultz Jr.	6/11 Kathleen Aspinall	6/19 Nicholas Wherry
6/2 Rebecca Abbott	6/13 Kay Gawlas	6/20 Bonnie Alspach
Megan Straub	6/14 James Hicken	6/21 Elinor Bayer
6/4 Kendall Thomas	Eunice Nasri	Lynne Wallis
6/5 John Connolly	Stephen Schall	6/22 Ayla Kappers
6/6 Vanya Rumsey	6/15 Evyn Cox	6/25 Christopher Franceschina
Donna Zizza	Nancy Warters	6/25 Sylvia Procyk
6/9 Richard Albert		6/26 Lynn Rieger
		6/27 Joyce Purcell
		Paula Scharding
		6/28 Brant Purcell
		6/29 Gregory "Greg" Mildner

*Yes, I am grateful for the blessing of life, and am happy to be a part of the Birthday Fund!*

Name: \_\_\_\_\_

Gift Amount: \_\_\_\_\_

This is a:

\_\_\_\_\_ Gift for my birthday month

\_\_\_\_\_ Gift in honor of the birthday of:

\_\_\_\_\_



**Wallace Newsletter**  
"Serving God, loving all."

1146 Greentree Rd.  
Pittsburgh, PA 15220

RETURN SERVICE REQUESTED  
Dated Information

NON-PROFIT  
ORG.  
US POSTAGE  
PAID  
PITTSBURGH,  
PA  
PERMIT NO.  
1526

Phone/Fax: 412.561.2431  
[www.wallacememorial.org](http://www.wallacememorial.org)

## WALLACE MEMORIAL PRESBYTERIAN CHURCH

**PASTOR**

DENNIS W. MOLNAR

**DIRECTOR OF  
COMMUNICATIONS**

MEREDITH BARRETT

**DIRECTOR OF MUSIC  
MINISTRY**

SANDRA RUBRIGHT

**FACILITIES  
MANAGER**

RONALD M.  
BRUSCEMI

**EDUCATION HOUR  
DIRECTOR**

NANCY SCHULTZ

**COORDINATOR OF  
MINISTRY & MISSION**

PAMELA L. FROST

**ADMINISTRATIVE  
ASSISTANT**

MARILYN R. HETZEL

**DIRECTOR OF  
NURSERY SCHOOL**

LYNN P. WREN

**CHANCEL CHOIR  
CONDUCTOR/  
ACCOMPANIST**

STEPHEN SCHALL